

5933 Main St

Williamsville, NY

Building Height: < 65'-0"

Max Lot Coverage: As less and requirements of yard, off street parking, loading, stacking and landscaping permit

Off Street Parking

Town of Amherst - Required Parking
 1st Floor Retail/Business/Medical Office
 Max Parking Ratio: 1 Space/100 sf
 3,810 sf / 100 sf per space = 38 Spaces Req'd
 Second Floor Residential
 Minimum 4 Dwelling Units = 8 Spaces Req'd
 Town of Amherst Total Parking = 46 Spaces Req'd

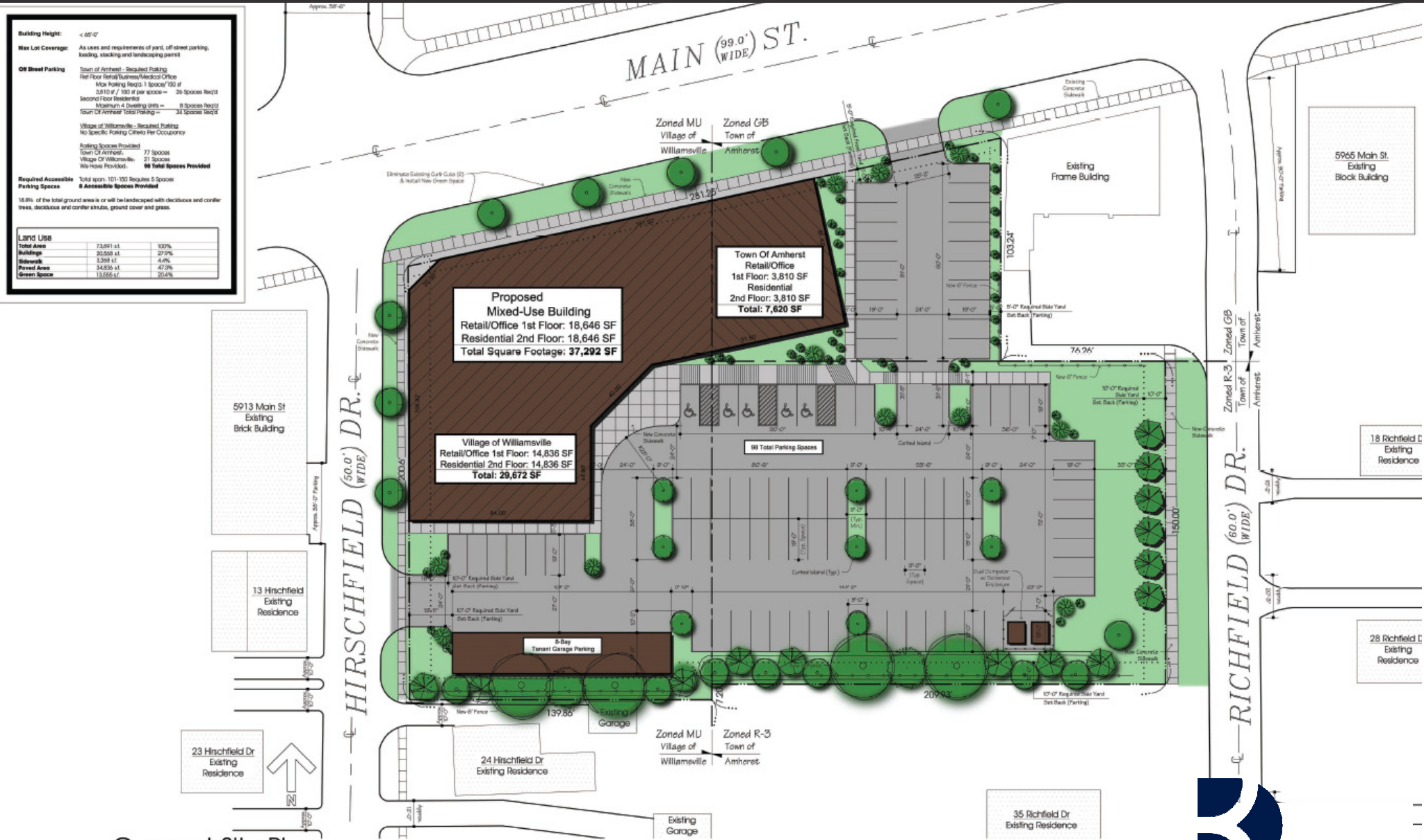
Village of Williamsville - Required Parking
 No Specific Parking Criteria Per Occupancy

Parking Spaces Provided
 Town of Amherst: 77 Spaces
 Village of Williamsville: 21 Spaces
98 Total Spaces Provided
 We have Provided.

Required Accessible Parking Spaces
 8 Accessible Spaces Provided

18.8% of the total ground area is or will be landscaped with deciduous and conifer trees, deciduous and conifer shrubs, ground cover and grass.

Land Use	Area	Percentage
Total Area	73,691 sq. ft.	100%
Buildings	30,550 sq. ft.	41.5%
Streets	3,200 sq. ft.	4.3%
Paved Area	34,830 sq. ft.	47.2%
Green Space	13,555 sq. ft.	18.4%



Concept Site Plan

November 15, 2013

1" = 20'-0"

Proposed Multi Use Building:

**Main And Hirschfield
 Amherst, New York**



BEVILACQUA
 DEVELOPMENT L.P.